

marlú®

haute couture

Spanning a history of over 35 years and centring around an on-going commitment to style and quality, Distribuzione Stella is a sound family business and is one of very few entirely Italian small to medium enterprises in the clothing for infants sector. Founded in Putignano, Puglia, through the dedication and hard work of entrepreneur Lucia Totaro, who today is supported by her family in managing the company, Stella has pursued sartorial elegance and excellence since the very beginning. The quality of its creations, upheld over the years due its pursuit of creativity and innovation and its use of only the best materials, is proof of a high level of manufacturing, made possible only through its strict adherence to the concept of "total made in Italy" - certified by the Institution for the safeguarding of Italian manufacturers - and by a chain of production which is one hundred per cent internal, from the yarn to the finished item.

marlú®
haute couture

The haute couture collection is made up wholly of exclusive, extremely refined designs, which enhance the creative capabilities and the manufacturing potential of the company and are made with the highest quality textiles and accessories, pairing the selection of yarns, laces and prized embroidery with careful technical and stylistic attention to detail. Without following adult fashion, these magnificently charming, contemporary little outfits, season by season place constant emphasis on a restrained, child-friendly style. The selection of bags, accessories and perfumed waters - for boys and girls - elegantly satisfy the needs of big and small, whilst the impeccable presentation and refined packaging make this the perfect choice for highlighting and celebrating the most precious moments of infancy.



Spring - Summer 2016



Days are getting longer, temperatures milder. Gardens are in bloom again and the fragrances and flavours of spring are returning. In rose gardens, pink and purple chase each other, the eternal and ever-new palette celebrating nature's awakening. The colours of spring blossom in a myriad of shades on dresses, bags and hats from the new Marlù couture collection, in minute geometrical arrangements or delicate floral patterns. Billowing skirts and light fabrics suggest long walks in the sun and evoke fresh sea breezes and balmy afternoons in the countryside. It is the most wonderful time of the year, the time to gather sweet ripe fruits from laden branches and to smell the sweet scent of roses.

marlù



- 12 -







marlù



marlù



A serene, angelic scent for girls to share with their mothers. It emanates an evanescent fragrance capable of awakening those sweet moments of childhood. It delivers warmth, freshness, love and intimacy. Characterised by an original tale note, the fragrance exudes a combination of fern and cotton flowers in the top notes, mixed with accords of white flowers and precious white woods. The Marlù fragrance for baby girls is simply lovely.



marlù

Since those very first days your child has been seeking you out and watching you, relying on you to be loved and protected. Why not return their trust, rocking them in your softest embrace, wrapped in the warmth of the finest wool and yarns and in lightly, exquisitely inlaid cottons. Offer them the certainty of your love and they will pay you back with their most beautiful smile.



marlù





marlù

Childhood is over in no time and it is made of days like these, days to be spent together, in order to celebrate these unique, once-in-a-lifetime moments, precious memories to be retained forever: a little break, far from prying eyes; a time for playing, for gazing and caressing; the colours of babyhood - cream, pink, sky blue - and the unusual contrasts that evoke nature in the shades of earth and sea. Minute fragments of a childhood to be protected from time flying past too quickly, enclosed in a priceless oasis that will forever linger.

marlù





marlú





marlù





marlù

It is undeniably one of the most precious children's formulas. A fragrance whose heart exudes warm Mediterranean sea breezes, sunny notes and glittery sea waves. A composition which highlights the beauty of nature and the flavours of the Italian coast, by mixing aromatic herbs with sunny citrus fruits. The fragrance evokes fresh lemon, apple, peach and warm sea aromas in the top notes, blending them with cheerful accords of the heart, created from rose embracing jasmine. The base notes of cedar wood, white amber and white mosses create sensual warmth reminding us of Mediterranean nights.



There are some days which are special, when time cannot be measured in hours or minutes. On these days, time seems to flow faster and then slower, like a meandering river, entrenching the memories of those fleeting, precious and once-in-a-lifetime moments into our emotions. The preparations, waiting for the ceremony to start, the joy of sharing this time with mum and dad, getting ready together: the party begins now, in these family moments, in these tiny acts that seal our closest ties.





marlù

A slightly dandy tuxedo, just like dad, and the billowing shapes and original patterns of a dress to match mum: waiting for the other guests to arrive, the children have been ready for some time, in their new clothes, all smart and well-groomed. Now it's time for their parents to find some time for themselves. And while they are getting dressed, there is still plenty of time for the kids to play a little longer before joining their friends and relatives.

marlù





marlù

Let kids be kids: ultimately, this special day is dedicated to them, and they deserve some time to have fun, to run around and to play carefree. They have been good up to now, so let them feel free to run wild for a little while. Their clothes are comfortable, the fabrics natural and soft; when the time comes to behave properly, they'll just need a quick comb, and even the little ones will be all smiling and elegant next to mum and dad.

marlù







marlù

The little outfits for baby's first ceremonies look to tradition, enriching baby fashion with the finest yarns and workmanship. Organza and macramé overlap on skirts and dresses to create new shades and new shapes, drawing from the rich heritage of the very best Italian artisanal tradition.

marlú





marlù

The simple elegance of the finest laces and of the minute and exquisite embroidery join with the impalpable lightness of tulle and the delicate, exquisite embellishments that make every Marlù couture dress a small treasure, designed to turn any occasion into a celebration. Linen and gabardine match the boy's cardigans in pure cotton and the soft pashminas in matching natural shades of white, coral and mud.

marlú





marlù





marlù

In the city's streets, during quiet afternoons walking along with mum and dad, elegant, refined clothes enliven children's games with colour harmonies and contrasts. Here comes Prince Charming, advancing in his shining armour; which young lady will be rewarded with his kiss for being the fairest of them all?

marlù





marlù



marlù



marlù

Like in childhood games, the refined models, the play of intense and soft colours and the timeless style of these modern little classics can turn every boy into a prince and every girl into a princess. The magic of fairy tales lives on in the small and big events of every-day life, with all the glamour and elegance that has made Italian style famous throughout the world.





marlú

marlú





marlú

Spring blooms, and on clothes and coordinated accessories - on bags and hats, hair clips and shoes - a delicate, colourful garden made of small handmade details blossoms. They are roses and buds, a tender, delicate homage to a blooming childhood, to the springtime of life, to the innocence of an age flying by too fast.



marlù



marlú





marlú



marlù



-80-





marlù

The certainty of giving them everything they need, protecting the sweet privilege of childhood, the precious charm of their earliest years with the simplest of gestures which nurture the joy of a stolen moment, just you and your child: the tenderness of a smile, a little cuddle, the smell of grass and flowers that reappear in delicate colours on fabrics, on lace and on matching bags and hats. Baby calmly rests, protected and wrapped in the warm embrace of their first blanket, lulled by your scent and by the warmth of your love.

marlú



marlú



marlù

Elegantly satisfying the many needs of the birth and of the first few months, the early childhood line of the Marlù couture collection is complemented with a maternity set that reproduces the patterns and designs of the babies' outfits. A handy, large bag, designed to hold all the essentials for the hospital stay and for the care of the child in the following months. The line is rounded off with a baby bag, which matches the mother's and is perfect for a walk together.





marlù

This brochure includes only part of the whole S/S 2016 Marlù baby couture collection. To receive information on the complete collection, please do not hesitate to contact the company or to visit marlucouture.com website. All logos, text, images and graphics in this catalogue are subject to copyright and other intellectual property rights belonging to the company Distribuzione Stella. These materials may not be reproduced without the express written permission of the company. The information contained herein is designed to be as comprehensive and factual as possible. In order to offer the best service possible, we nevertheless reserve the right to make changes at any time, without notice, to colours, materials, specifications, models and availability.

Distribuzione Stella S.r.l. - Via Cavalieri del lavoro, z.i. 70017 Putignano (Bari) Italia - Phone: +39 080 4934794 - Fax: +39 080 4931365 - export@marlu couture.com

marlucouture.com



3 4

P.3-4 Spotted sleeveless dress with sash Art. F327



8 9

P.8 Spotted sleeveless dress with sash Art. F327
Pinafore with white bodice, floral skirt and rose sash Art. F309



12 13

P.12 Sleeveless dress with floral print and handsewn roses on the bodice Art. 330

P.13 Foreground : Sleeveless dress with floral print and handsewn roses on the bodice Art. F330 Background : Pinafore with white bodice, floral skirt and rose sash Art. F309



14 15

P.14 Foreground Spotted sleeveless dress with sash Art. F327

In the background Pinafore with white bodice, floral skirt and rose sash Art. F309

P.15 Pinafore with white bodice, floral skirt and rose sash Art. F309



16 17

P.16 Pinafore with white bodice, floral skirt and rose sash Art. F309 ; Hat with spotted Art. F327CP

P.17 From left: Sleeveless dress with floral print and handsewn roses on the bodice Art. 330 Spotted sleeveless dress with sash Art. F327 ; Pinafore with white bodice, floral skirt and rose sash Art. F309



18 19

P.18 Marlu' Girl Perfume Art. PRO1



20 21

P.21 Two-piece set. Top and culottes Art. BX1517



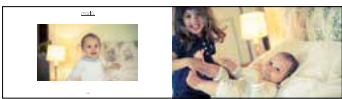
22 23

P.22 - 23 Two-piece set. Top and culottes Art. BX1517
Matching blanket Art. BX1580



24 25

P.24 Babygrow Art. BX7610



26 27

P.26 - 27 Babygrow Art. BX7610



28 29

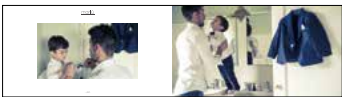
P.28 Two-piece set with cotton body and linen trousers Art. BX7821
Matching blanket Art. BX7880

P.29 Cotton playsuit Art. BX7810



30 31

P.30 Suit with jacket, shirt, tie and trousers Art. BB6060
Sleeveless dress Art. F331



32 33

P.32 -33 Suit with jacket, shirt, tie and trousers Art. BB6060



34 35

P.34 Suit with jacket, shirt, tie and trousers Art. BB6060

P.35 Marlu' Boys Perfume Art. PRO2



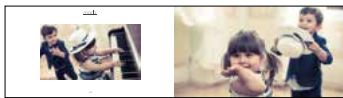
36 37

P.37 Suit with jacket, shirt, tie and trousers Art. BB6060



38 39

P.38 - 39 Sleeveless dress Art. F331



40

41

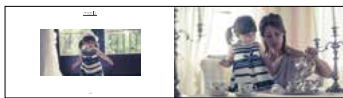
P.40 - 41 Suit with jacket, shirt, tie and trousers Art. BB6060
Sleeveless dress Art. F331



42

43

P.42 Suit with jacket, shirt, tie and trousers Art. BB6060



44

45

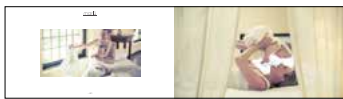
P.44 - 45 Matching hat F331CP ; Sleeveless dress Art. F331



48

49

P.48 Romantic sleeveless dress Art. BB3500



50

51

P.50 - 51 Romantic sleeveless dress Art. BB3500; Hairband Art. BB35FA



52

53

P.52 Romantic sleeveless dress Art. BB3500; Hairband Art. BB35FA

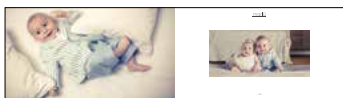


54

55

P.54 Romantic sleeveless dress Art. BB3500

P.55 Left : Soleil dress Art. BB6 ; Right : Elegance dress Art. BB40 ; Hairband Art. BB40FA



56

57

P.56 Suit with jacket, shirt, trousers and matching pashmina Art. BB5160

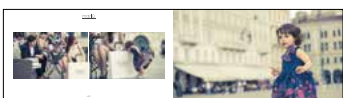
P.57 Romantic sleeveless dress Art. BB3500 and hairband Art. BB35FA
Suit with jacket, shirt, trousers and matching pashmina Art. BB5160



58

59

P.58 Sleeveless dress Art. C304



60

61

P.60 - 61 Sleeveless dress Art. C304



62

63

P.62 Pinafore with white bodice, floral skirt and rose sash Art. F309

P.63 Pinafore with white bodice, floral skirt and rose sash Art. F309



64

65

P.64 Pinafore with white bodice, floral skirt and rose sash Art. F309

Suit with jacket, shirt, tie and trousers Art. BB6060

P.65 Suit with jacket, shirt, tie and trousers Art. BB6060



66

67

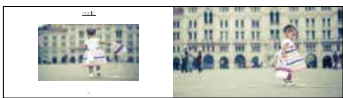
P.67 Sleeveless dress - Art. F328



68

69

P.68 Sleeveless dress Art. F328 ; with matching bag Art. F328BP



70

71

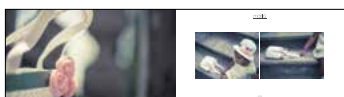
P.70 - 71 Sleeveless dress Art. F328 ; with matching bag Art. F328BP



72

73

P.72 Sleeveless dress Art. F313



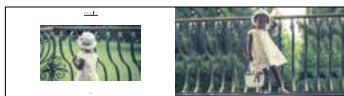
74



75

P.74 Matching bag Art. F313BP (detail)

P.75 bag Art. F313BP ; Sleeveless dress Art. F313 ; Matching hat Art. F313CP



76



77

P.76 Sleeveless dress Art. F313 ; Matching hat Art. F313CP

P.77 Sleeveless dress Art. F313 ; Matching hat Art. F313CP ; Matching bag Art. F313BP



78



79

P.78 Left : Playsuit Art. BX3821 ; Matching hat Art. BX38ZU ; Matching blanket Art. BX3881
Right : Suit with jacket, shirt, tie and trousers Art. BB6060

P.76 Suit with jacket, shirt, tie and trousers Art. BB6060
Matching hat BB6060CP



80



81

P.80 Romantic sleeveless dress Art. BB3500

P.81 Soleil dress Art. BB6



82



83

P.82 Floral dress Art. BX15



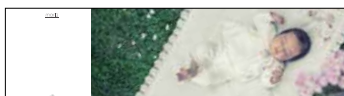
84



85

P.84 Large and small travel bag complete with accessories
(travel changing mat; large and small baby bottle holder) Art. BB35SV

P.82 Floral dress Art. BX15 ; On the bench, right : Travel changing mat Art. BB3590
On the grass, right : Small baby bottle holder Art. BB3591



86



87

P.86 - 87 Two-piece set Art. BX4918, Matching blanket Art. BX4980



88



89

P.89 From left : Large nursery bag with accessories
(Travel changing mat; large and small baby bottle holder) Art. BB4092

marlucouture.com